

## Manual Tube Bender

An ideal tool for accurate bending of mild steel tubes up to 180°, Ø10-25mm, wall thickness 0.8-2.0mm.

### Characteristics:

It is mounted solidly onto the bench and comes with extension handle and 7 x 180° bending shoes included. The bending shoes can be changed in seconds and the small roller is adjustable for pressure by moving the thumb screw inside the main arm.

All dies are made of steel and nearly unbreakable.

Comes delivered in a heavy duty moulded plastic carry case with handle.

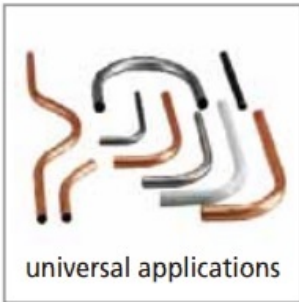
Optimum bending results without deformation or ripples.

Universal applications: U-bends, counter-bends, swan-neck bends and connecting bends possible at all levels.

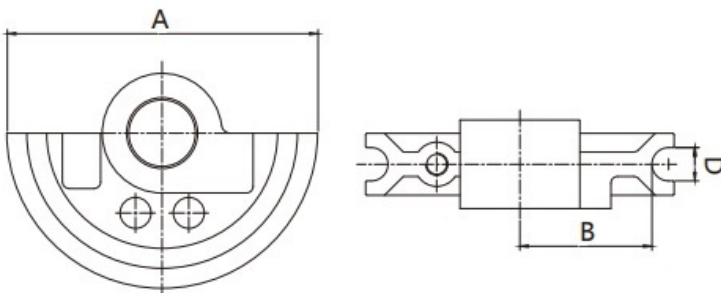
Top quality, precise and simple to use.



Sturdy plastic case



M-SNE-MANUAL	Bending range(O.D.) (mm)	Bending shoes		G.W. (Kg)	Packing size (cm)
		inch	mm		
		Ø10-Ø25	3/8" 1/2" 9/16" 5/8" 3/4" 7/8" 1"		



Bending shoe size (inch)	A (mm)	Minimum bend radius B(mm)	D (mm)	Wall thickness of Standard steel pipe, stainless steel pipe (mm)	Wall thickness of Standard copper tubes (mm)
3/8"	100	42	11	0.8	1.0
1/2"	119	50.5	13	1.0	1.2
9/16"	139	55.5	15	1.0	1.2
5/8"	159	68.5	17	1.0	1.2
3/4"	179	77	20	1.0	1.2
7/8"	225	98.5	23	1.2	1.5
1"	225	97	26	2.0	1.6