

Pipe Benders

Manual Hydraulic Pipe Benders

SNE - 33

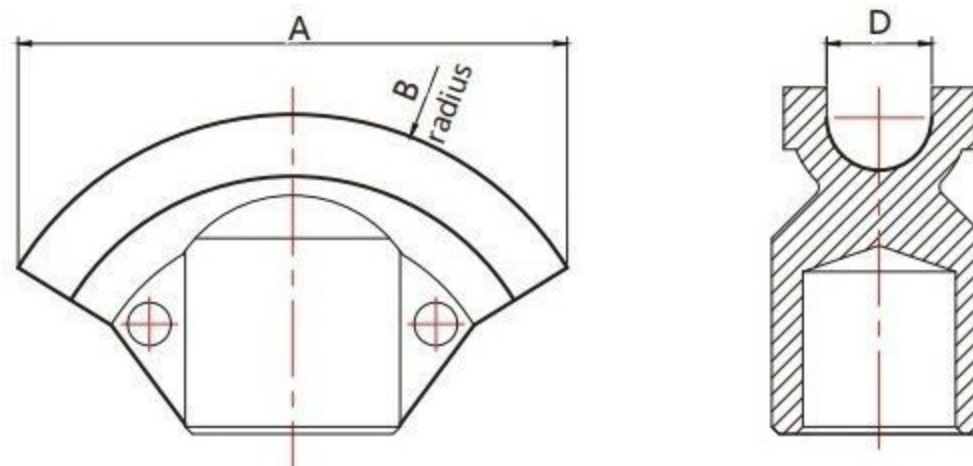
Characteristics:

- Capable of bending angles from 0° to 90° on pipes ranging from 3/8" to 1".
- Cold bending, no pre-warming of pipe is required.
- Fast and easy setup on the jobsite.
- Simple to use.
- Steel storage box for easy carry from site to site.



Model	Hydraulic Ram Output (Ton)	Ram stroke (mm)	Bending range(O.D.) (mm)	Bending shoes (inch)	G.W. (Kg)	Packing size (cm)
SNE 33	6	150	Ø16-Ø33	3/8" 1/2" 3/4" 1"	17	43×38×13

Specifications of bending shoes



Bending shoe size (inch)	A (mm)	B (mm)	Minimum bend radius (mm)	D(mm)	Pipe Schedule	Wall thickness (mm)
3/8"	104	63.5	50	18	40	2.3
1/2"	112	68.5	54.8	21.5	40	2.8
3/4"	131	87.5	68.5	28	40	2.9
1"	147	107	86	34	40	3.4

• Pipe schedule : 40 = Standard